

1		2		3		4	
				版本 Rev No.	描述 Description	日期 Date	姓名 Name

D

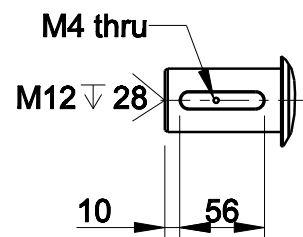
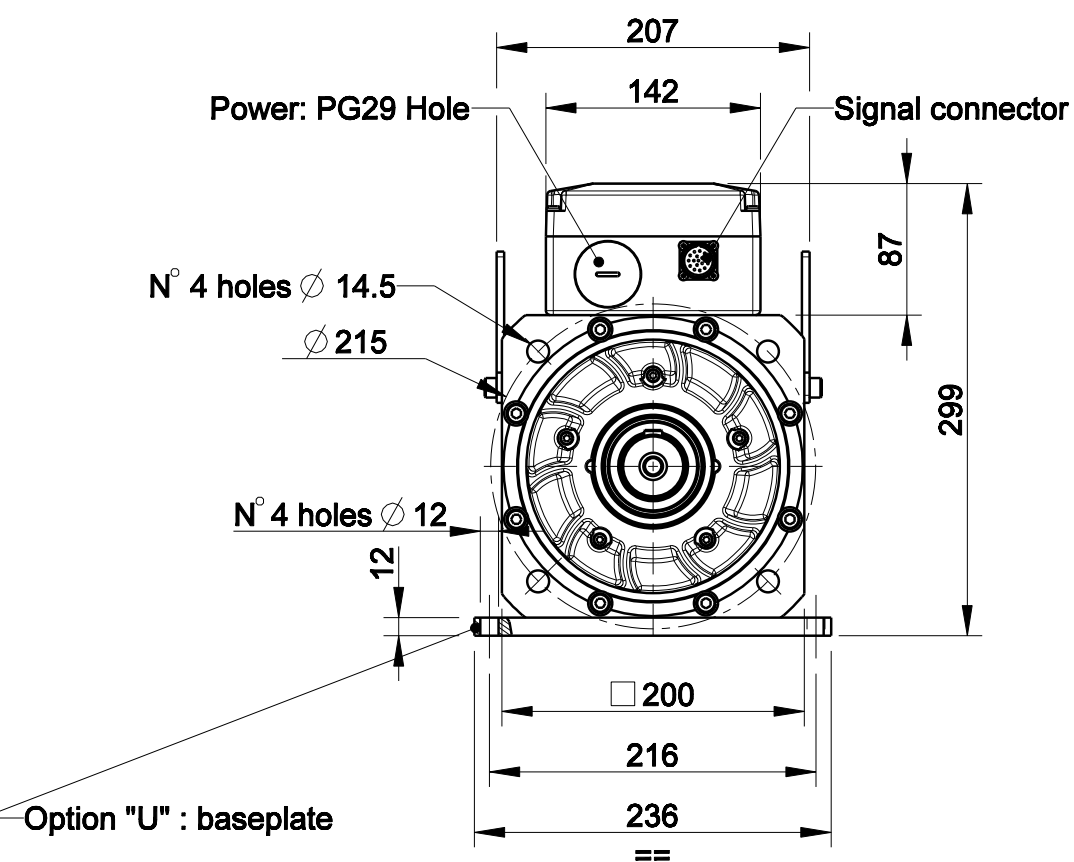
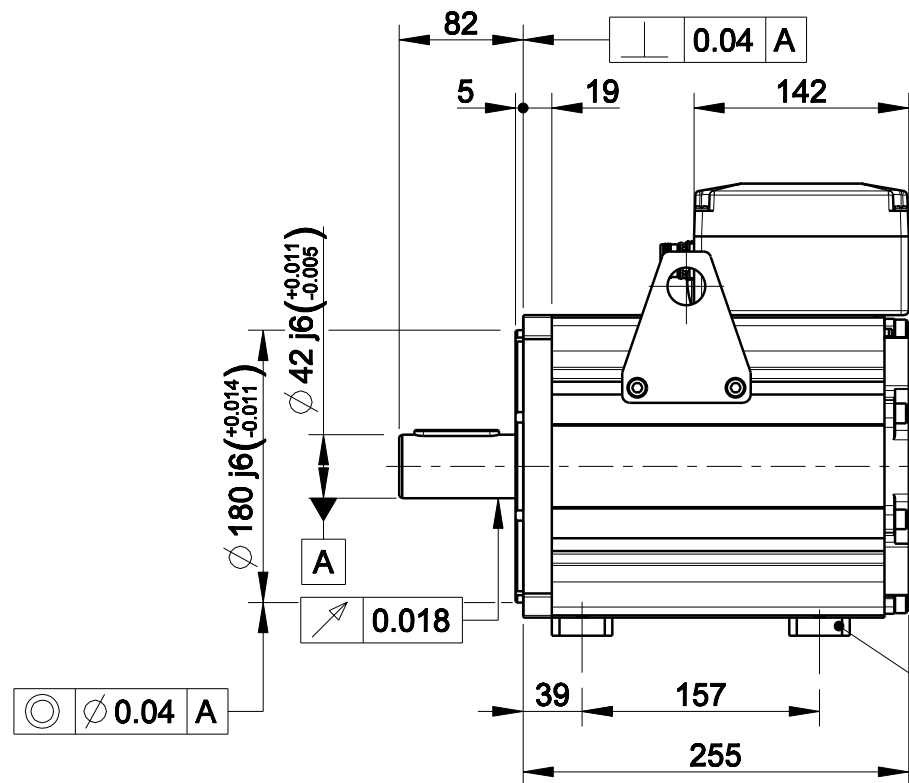
C

B

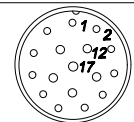
D

C

B

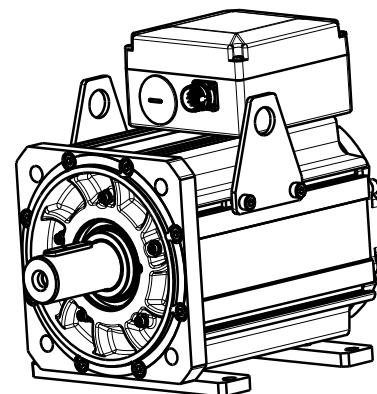


Option "K" : full key 12 x 8 x 36



Signal Connector
Type: M23 Size 1-17 Pin

Pin	EnDat Code:C,M,N,U,Q	Resolver Code:R	SinCos Code:S
1	A+	n.c.	A+
2	A-	n.c.	A-
3	DATA+	n.c.	I+(index)
4	PTC+	SIN-,1 c/r	Sin-(C-),1 c/r
5	CLOCK+	COS-,1 c/r	Cos-(D-),1 c/r
6	n.c.	COS-,1 c/r	Cos-(D+),1 c/r
7	0 V	RESEX+	0 V
8	KTY84+**	KTY84+**	PTC+
9	KTY84-**	KTY84-**	PTC-/KTY-**
10	+Vcc	RESEX-	+Vcc(5Vdc)
11	B+	n.c.	B+
12	B-	n.c.	B-
13	DATA-	n.c.	I-(index)
14	CLOCK-	SIN+,1 c/r	Sin+(C+),1 c/r
15	0V sense	n.c.	0V sense
16	Vcc sense	PTC+	+Vcc sense
17	PTC-	PTC-	KTY+**



Approved	
Signature	Date

材质 Material		处理 Treatment		项目 Project-Prod.item/Instrument	
				U31004A103	
几何公差 GB/T1184 (ISO 2768-2) Geometrical tolerance		未注倒角 Undimensioned chamfers		描述 Description	
未注公差 GB/T1804 (ISO 2768-2) Linear tolerance		1x45°		MOTOR ASSEMBLY	
角度公差 GB/T1804 (ISO 2768-1) Angular tolerance		未注圆角 Undimensioned radii		电机总装	
0.5 +3		±0.1		图号 Drawing No.	
±0.1		±0.1		50220N-0-A-3	
年,月,日 Date		名字 Name		版本 Rev	
设计 Designed				A	
绘图 Drawn				比例 Scale	
校对 Checked				1:5	
				重量 Kg Mass	
				35.770	
				数量 Qty	
				页码 Sheet	
				1/1	



NINGBO Ltd.
宁波菲仕电机技术有限公司