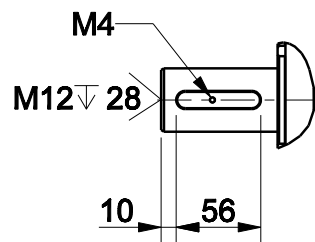
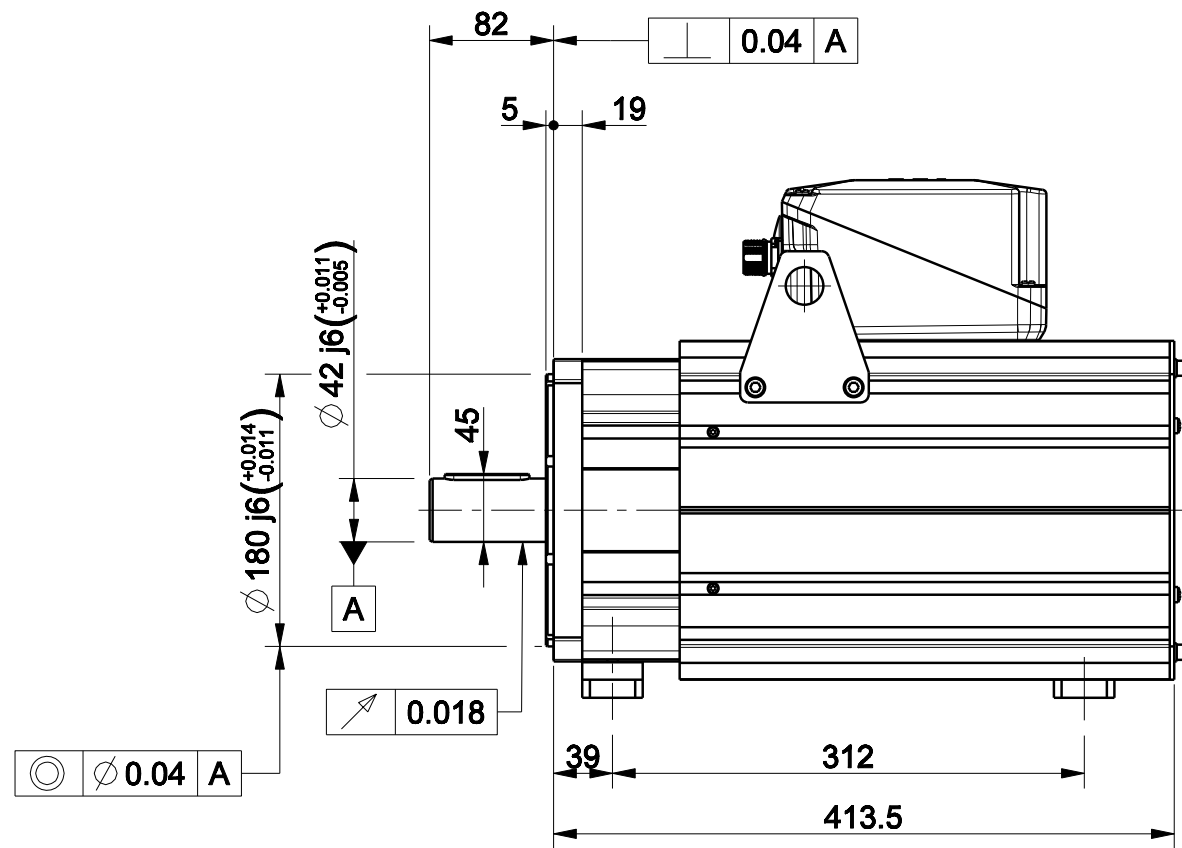
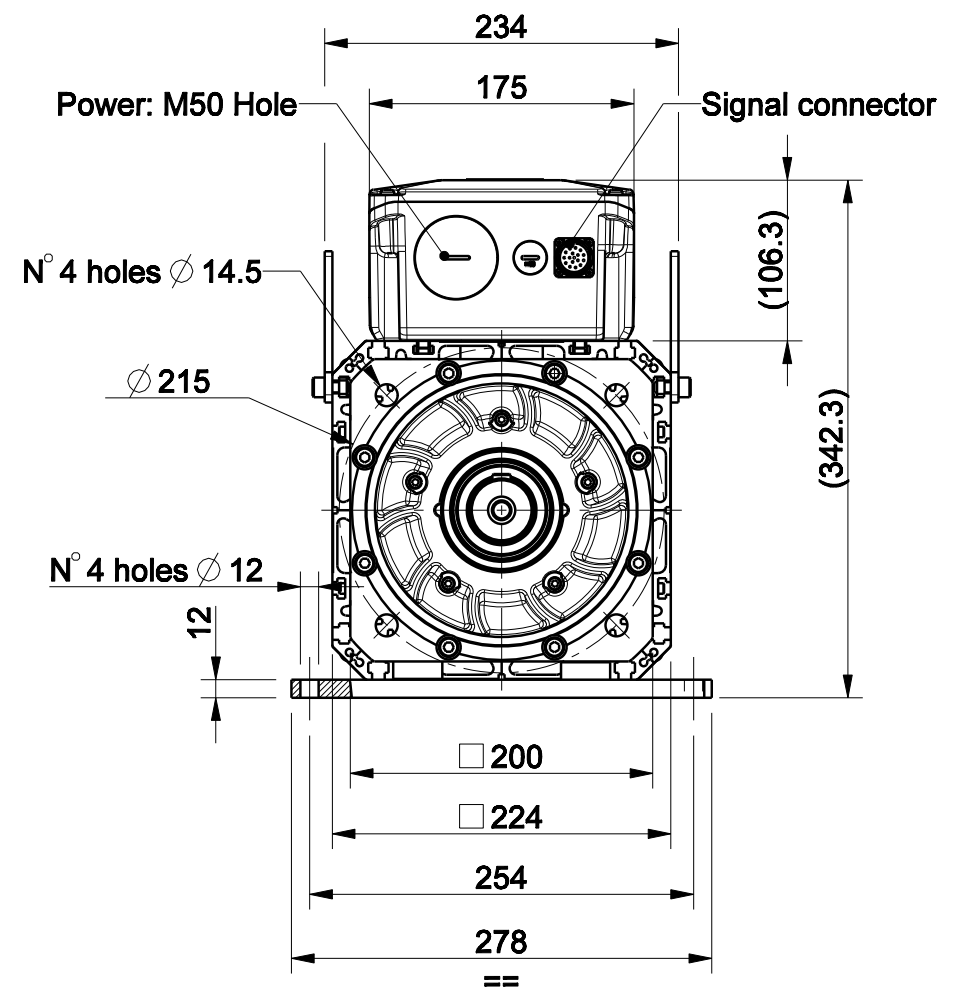
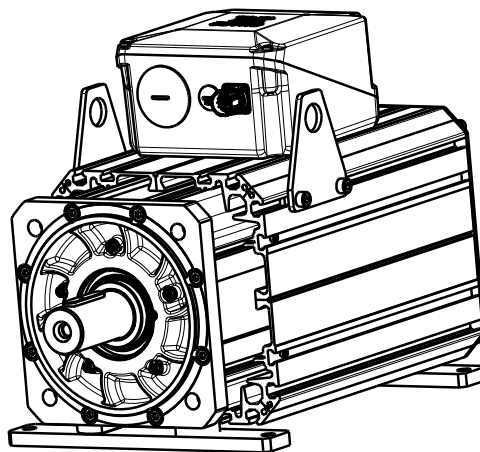


1		2		3		4	
				版本 Rev No.	描述 Description	日期 Date	姓名 Name

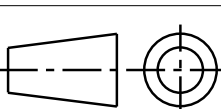



Option "K" : full key 12 x 8 x 56



Approved	
Signature	Date

Signal Connector Type: M23 Size 1-17 Pin			
Pin	EnDat Code:C,M,N,U,Q	Resolver Code:R	SinCos Code:S
1	A+	n.c.	A+
2	A-	n.c.	A-
3	DATA+	n.c.	I+(index)
4	PTC+	SIN-,1 c/r	Sin-(C-),1 c/r
5	CLOCK+	COS-,1 c/r	Cos-(D-),1 c/r
6	n.c.	COS-,1 c/r	Cos-(D+),1 c/r
7	0V	RESEX+	0V
8	KTY84+**	KTY84+**	PTC+
9	KTY84+**	KTY84+**	PTC-/KTY+**
10	+Vcc	RESEX-	+Vcc(BVdc)
11	B+	n.c.	B+
12	B-	n.c.	B-
13	DATA-	n.c.	I-(index)
14	CLOCK-	SIN+,1 c/r	Sin+(C+),1 c/r
15	0V sense	n.c.	0V sense
16	Vcc sense	PTC+	+Vcc sense
17	PTC-	PTC-	KTY+**

材质 Material						项目 Project-Prod.item/Instrument	
处理 Treatment						U31007F	
几何公差 GB/T1184 (ISO 2768-2) Geometrical tolerance		K		未注倒角 Undimensioned chamfers		描述 Description	
未注公差 GB/T1804 (ISO 2768-2) Linear tolerance		m		1x45°		MOTOR ASSEMBLY	
角度公差 GB/T1804 (ISO 2768-1) Angular tolerance		±1°		未注圆角 Undimensioned radii		电机总装	
0.5 +3	>3+ 6	>6+ 30	>30+ 120	>120 +400	>400+ 1000	>1000 +2000	>2000 +4000
±0.1	±0.1	±0.2	±0.3	±0.5	±0.8	±1.2	±2
年,月,日 Date		名字 Name				图号 Drawing No.	
设计 Designed						版本 Rev	
绘图 Drawn						比例 Scale	
校对 Checked						页码 Sheet	
				重量 Kg Mass		57.477	数量 Qty
							1/1